

Drought Tolerant Plants

By Chris Claus
St. Petersburg
Water Conservation
Coordinator



Creating a Florida-friendly Yard

- Planning for low maintenance
- Proper use of water:
 - grouping plants according to water needs, then irrigating them accordingly
 - proper watering during the plant establishment period
 - recognition that water needs change as plants mature



*Choosing the
Right Plant for the Right Place*

Right Plant, Right Place!

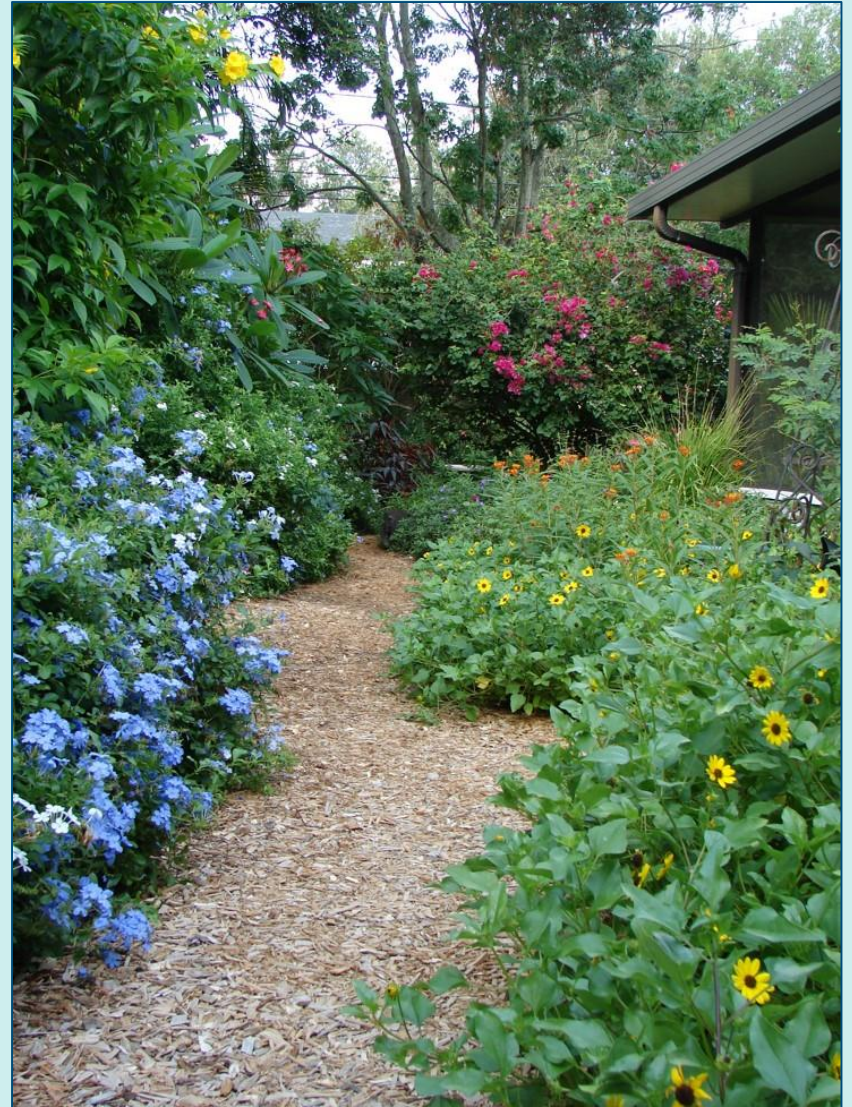


- Less water
- Less pesticides
- Less fertilizer
- LESS WORK!

Need to match
selected plants to
site conditions:
pH, sunlight,
drainage, etc.

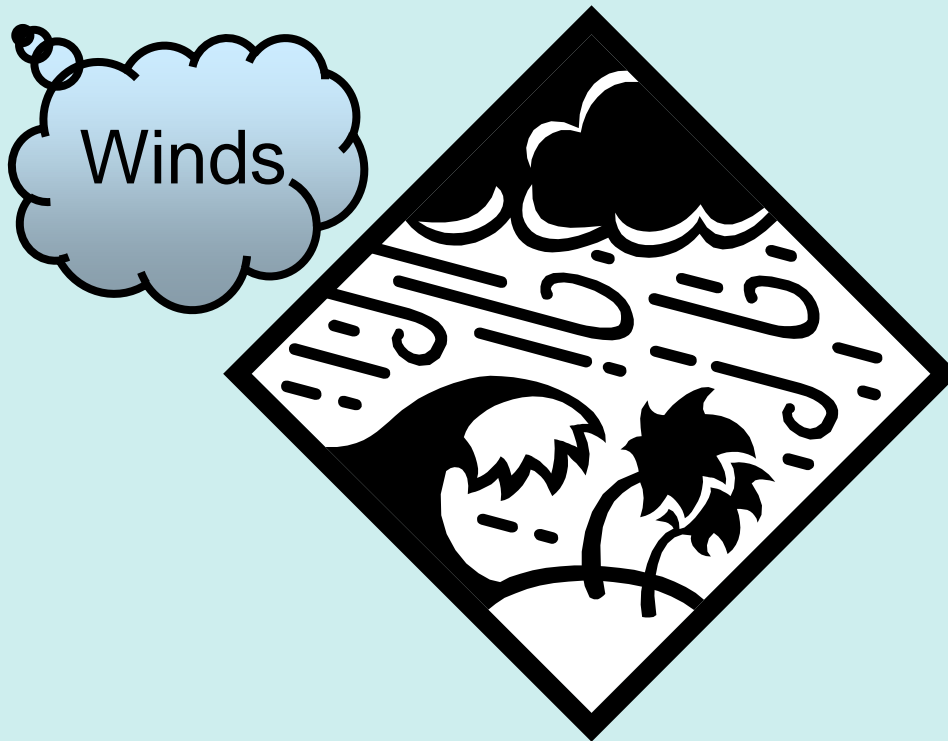
Factors Affecting Drought Tolerance

- Right plant, right place
- Proper planting and establishment
- Fertilizer/ fertilization practices
- Watering practices



Right Plant / Right Place: **Plant Section Challenges**

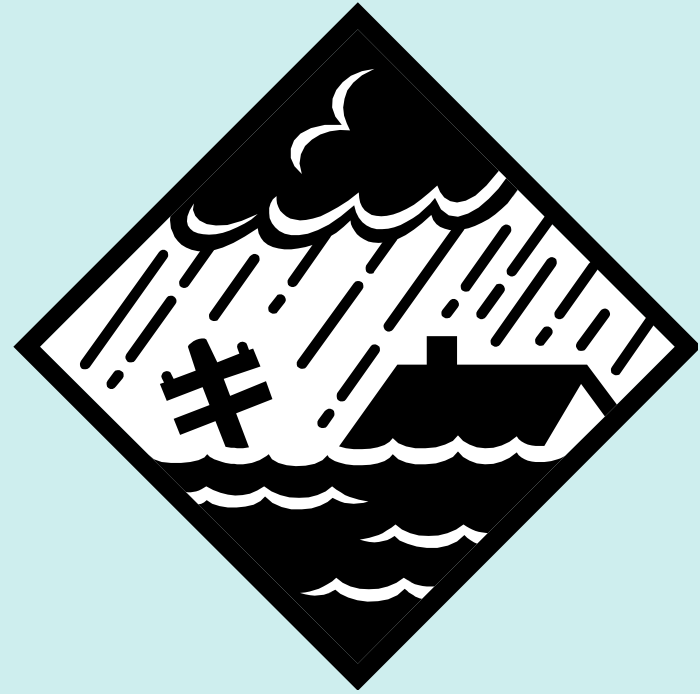
Sandy coastal soils



Right Plant / Right Place: **Plant Section Challenges**

Rainfall patterns

- Normally 52-55 inches a year, 2/3 during our summer months (mid-June to mid-Sept.)
- Droughts

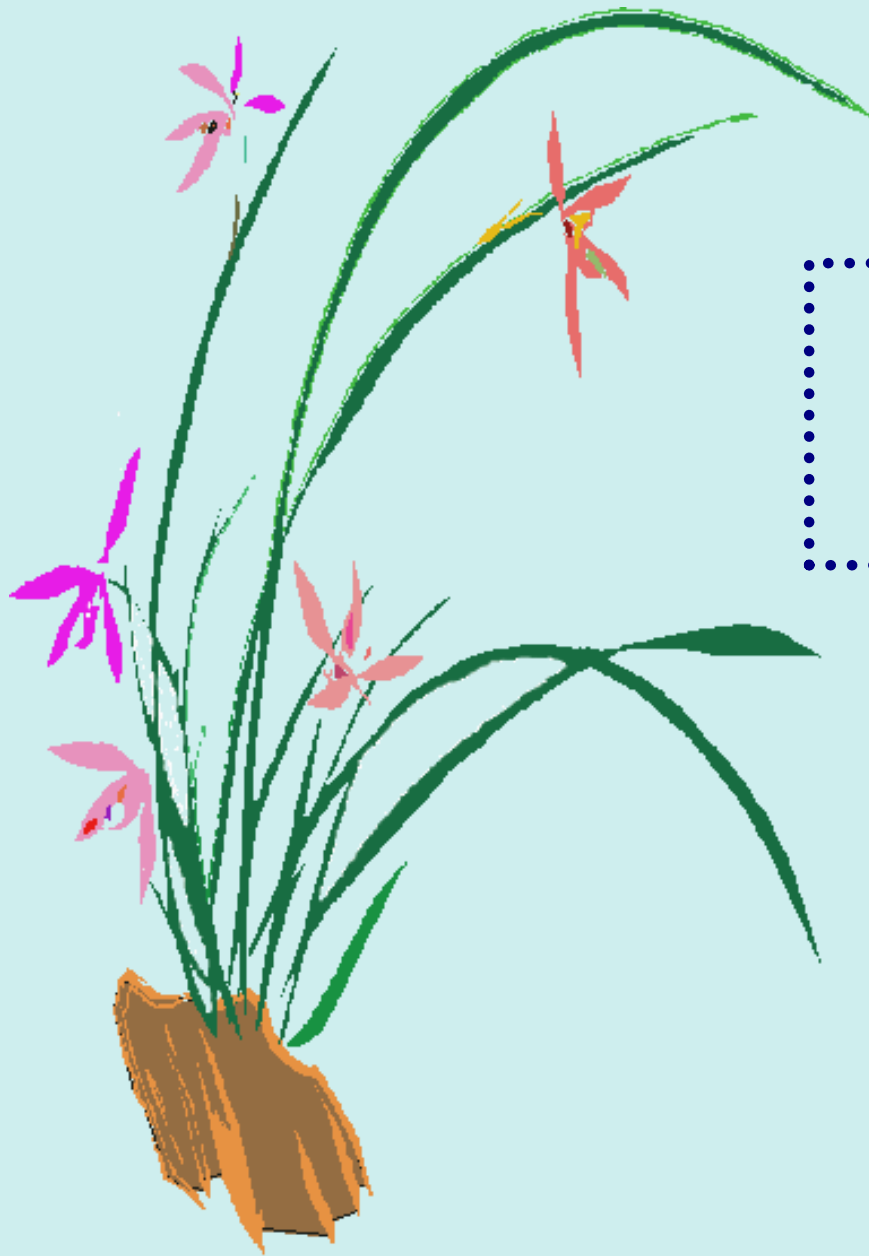


Native Plants in the Landscape



- Adapted to local soil conditions
- Adapted to local (typical) climate
 - Rainfall
 - Humidity
 - Temperatures & extremes
- Preferred by native wildlife through familiarity

Right Plant, Right Place is still necessary!



*Native
Groundcovers*

Sea purslane

(*Sesuvium portulacastrum*)

- full sun
- fleshy, succulent plant
- salt tolerant



Beach sunflower

(*Helianthus debilis*)

- full sun
- salt tolerant
- yellow, daisy-like flower most of the year
- butterfly plant



Blue Porterweed

(*Stachytarpheta jamaicensis*)

- horizontal-growing
- butterfly plant
- flowers open in morning, closed in afternoon

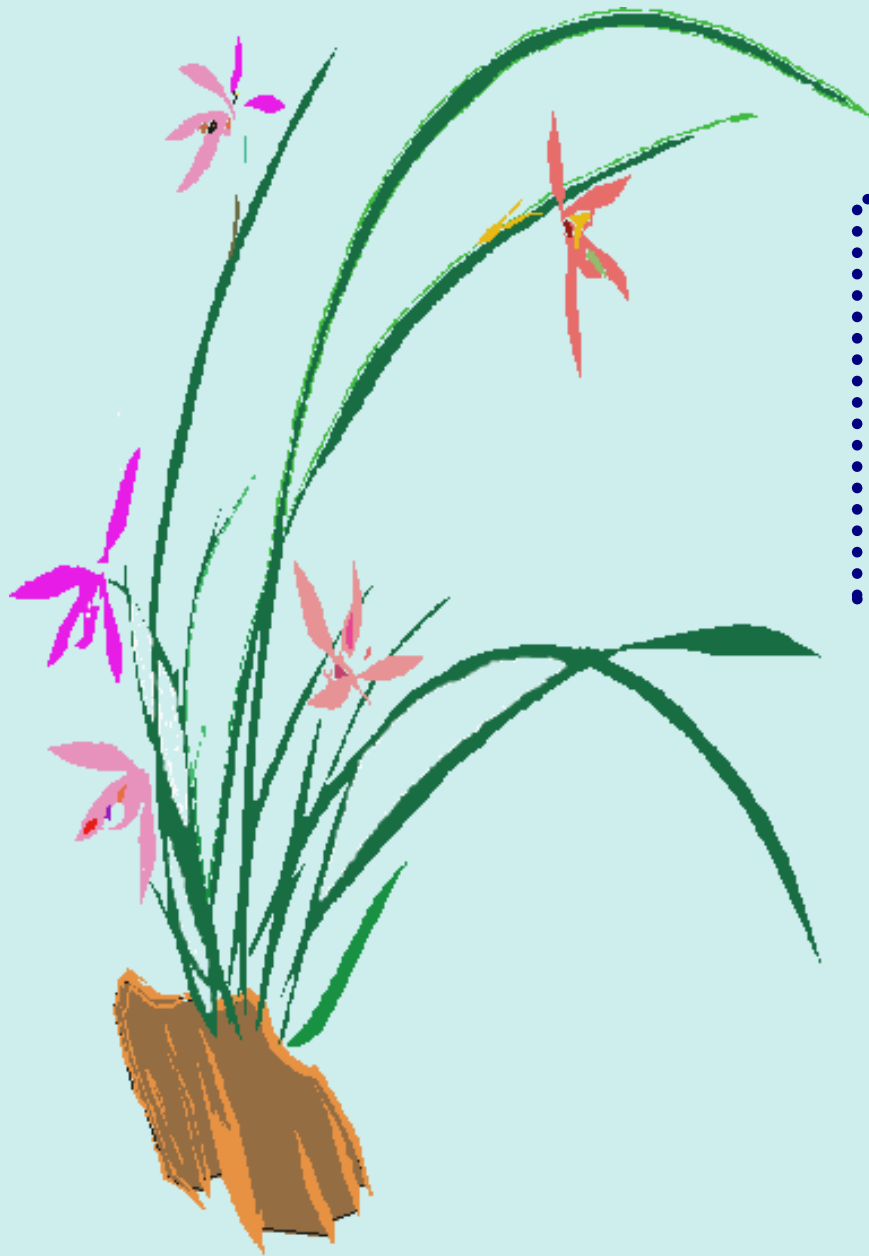


Sunshine Mimosa

(*Mimosa strigillosa*)

- also called Sensitive Plant due to fern-like leaves that fold up when touched
- can be substituted for turf (aggressive)
- does not tolerate shade





*Non- Native
Groundcovers*

Trailing lantana

(*Lantana montevidensis*)

- lavender flower color
- blooms spring, summer, fall
- salt tolerant



African Iris

(*Iris x hollandica*)

- clump forming
- iris like white flowers with yellow and lavender accents



Liriope (*Liriope muscari*)

- part or full sun
- several varieties available:
giant, variegated, dwarf
- salt tolerant



Asiatic jasmine (dwarf) (*Trachelospermum asiaticum*)

- full sun to full shade
- eventually forms a dense mat
- several varieties available:
various variegated leaf colors
and sizes





*Native
Ornamental
Grasses*

Muhly grass

(*Muhlenbergia capillaris*)

- pinkish violet plumes

Oct. through Dec.

- fine textured foliage

- salt tolerant



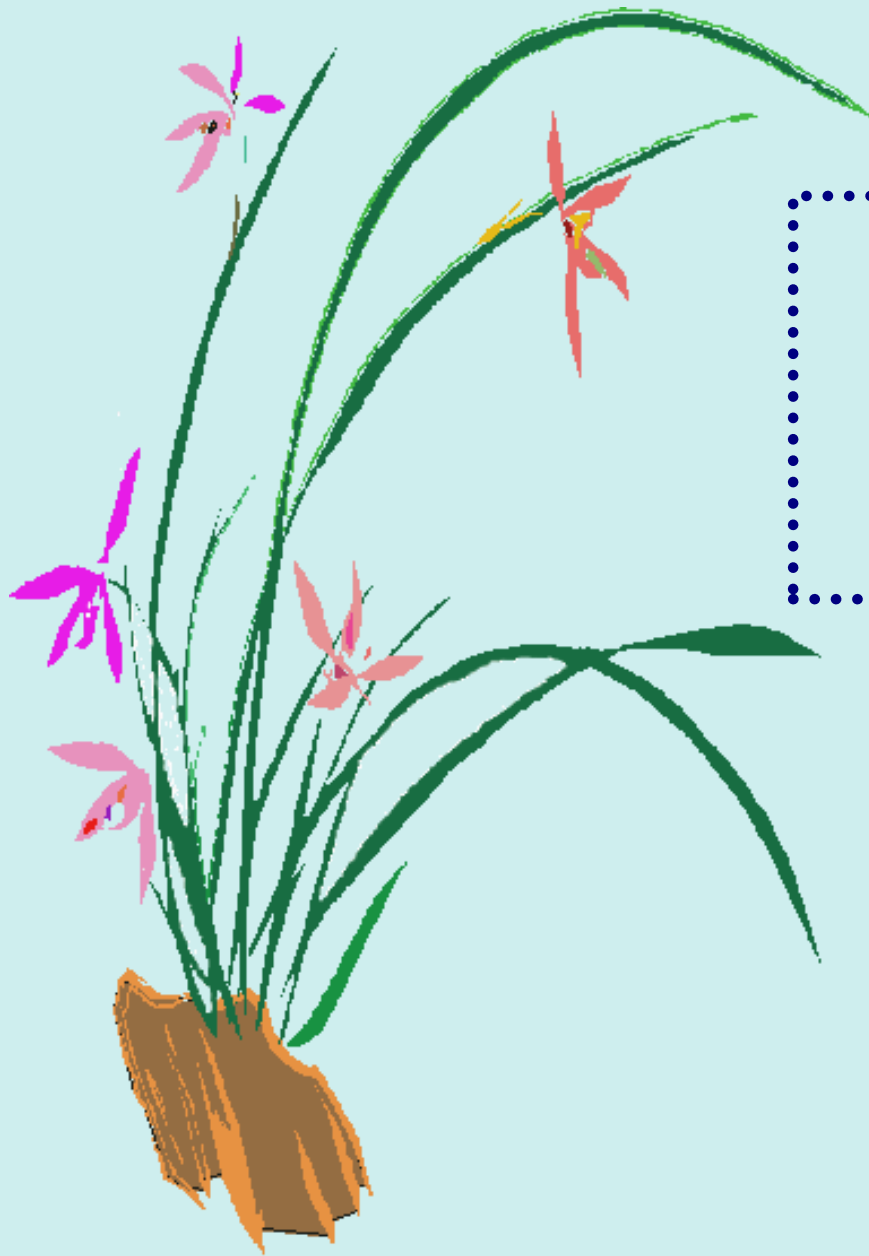
Fakahatchee grass

(*Tripsacum dactyloides*)

- large and dwarf varieties available

- produces large clumps of wide leaves

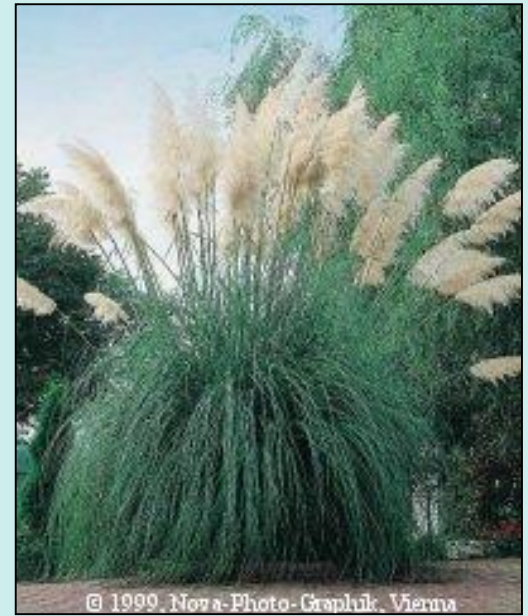




*Non- Native
Ornamental
Grasses*

Pampas grass (*Cortaderia Selloana*)

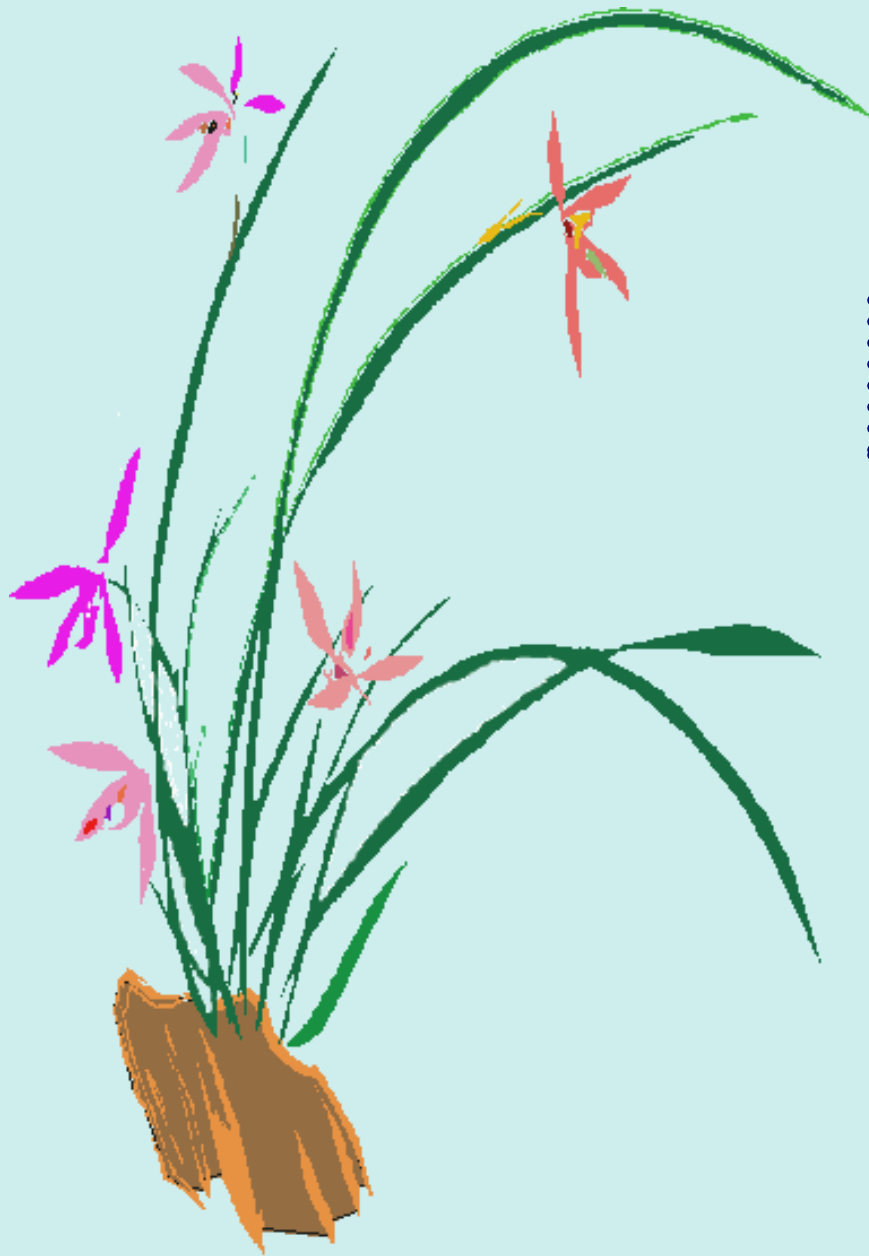
- large clumps of arching leaves with razor-like margins
- can be pruned back



Fountain grass

(*Pennisetum setaceum*)

- green & red leaved and flowered varieties
- can be pruned back annually
- NOTE: white flowered form produces viable seeds



Native Shrubs

American Beautyberry

(*Callicarpa americana*)

- deciduous plant
- magenta berries in clusters around the stems starting in fall



Black Haw / Walter Viburnum

(*Viburnum obovatum*)

- semi-deciduous
- blackish berries in summer
- sends out suckers to produce a thicket
- good for wildlife



Firebush (*Hamelia patens*)

- butterfly and hummingbird plant
- tubular red-orange flowers most of year
- full to part sun



Yaupon Holly (*Ilex vomitoria*)

- great wildlife plant
- dwarf and upright forms
- full sun to full shade
- salt tolerant





*Non- Native
Shrubs*

Indian hawthorn (*Raphiolepis indica*)

- mounding form
- a variety of forms and flower colors
- blooms intermittently throughout the warm months
- salt tolerant, if protected



Podocarpus/ Japanese Yew (*Podocarpus macrophyllus*)

- upright growing with dark green, thin leaves
- full to part sun
- slow growing

Firecracker Bush

(*Russellia equisetifolia*)

- fire red flowers on sprawling branches with fern-like leaves
- blooms during warm months
- full sun



Plumbago/ Leadwort

(*Plumbago capensis*)

- full to part sun
- sky blue flowers most of the year
- sprawling form





*Native
Bedding
Plants*

Butterfly weed

(*Asclepias tuberosa*)

- great butterfly plant
- bright orange flowers
- full to part sun
- many native species available



Blanketflower / Indian blanket

(*Gaillardia pulchella*)

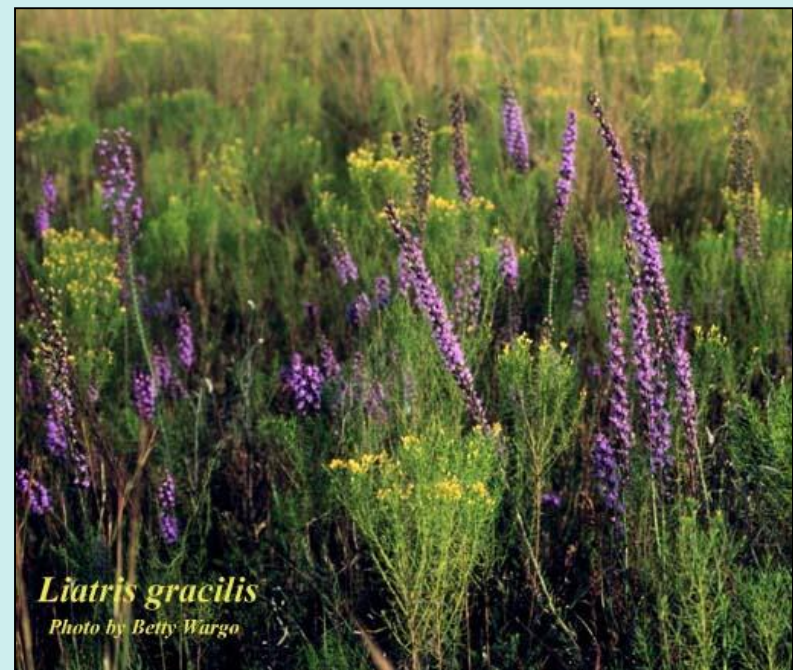
- annual plant that reseeds itself
- full sun
- salt tolerant



Blazing Star

(*Liatris gracilis*)

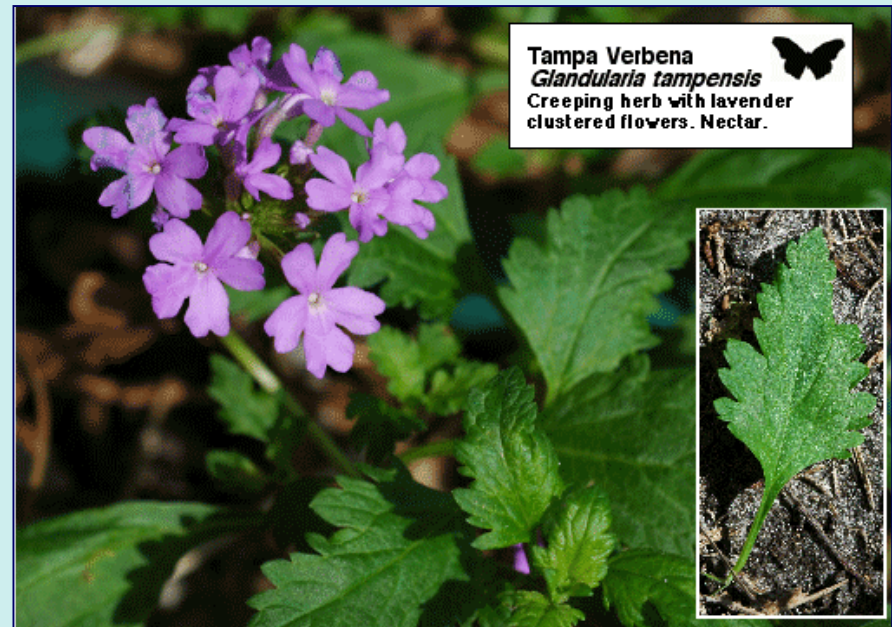
- upright 3 foot stems
- full sun
- interesting flower habit
- butterfly plant



Tampa Vervain

(*Verbena tampaniensis*)

- upright 2 foot stems
- partial to full sun
- interesting flower habit
- butterfly plant





*Non- Native
Bedding
Plants*

Gazania daisy

(*Gazania rigens*)

- full sun
- interesting flower patterns
- summer annual
- salt tolerant



Periwinkle/Vinca

(*Catharanthus rosea*)

- full sun
- many flower colors and plant forms available
- salt tolerant



Wax begonias

(*Begonia x semperflorens-cultorum*)

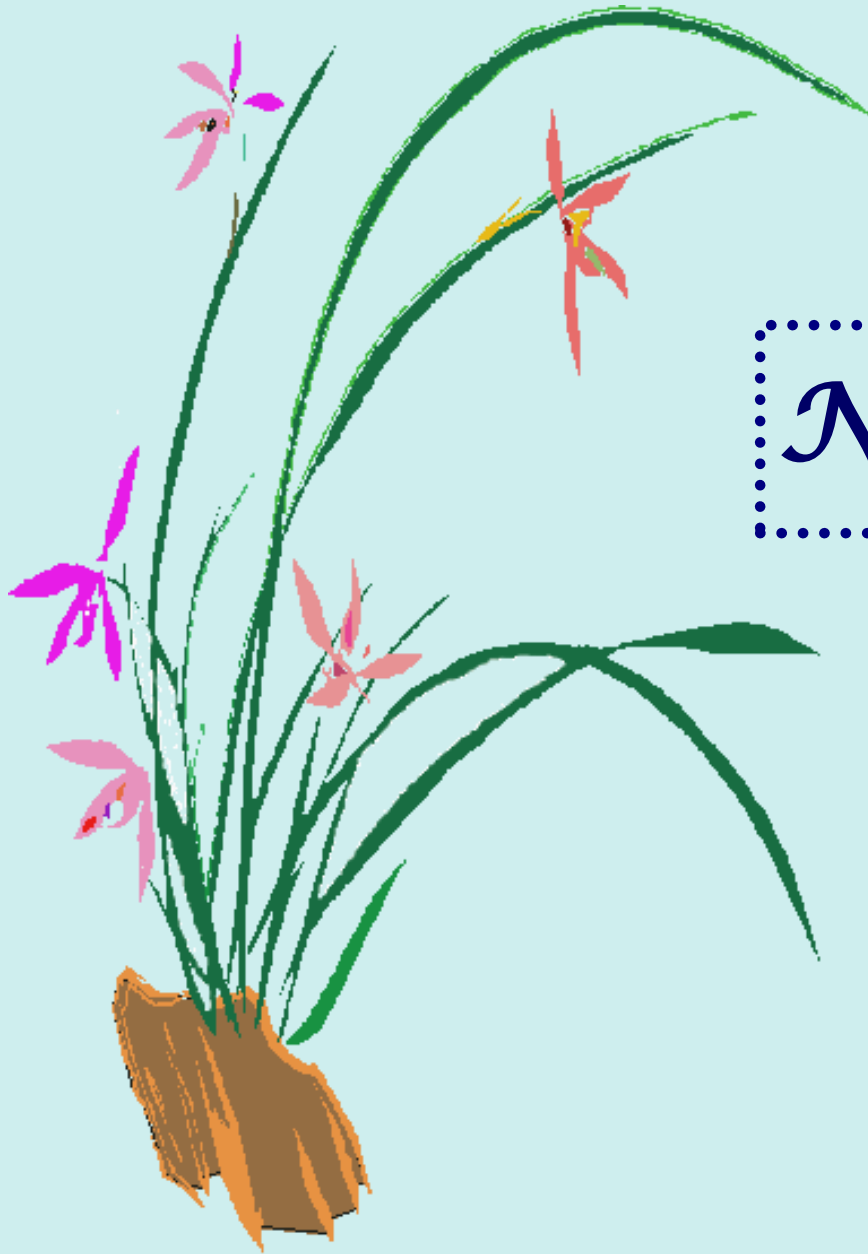
- summer annual
- red leaved variety does better in full sun; green leaved in part sun during summer
- salt tolerant



Cockscomb/ Celosia

(*Celosia argentea*)

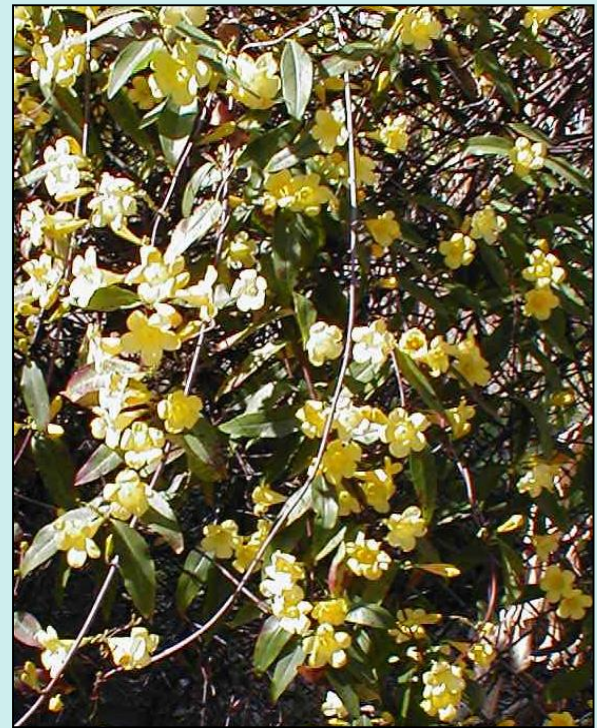
- many flower colors in two forms
- red leaved variety 'New Look'
- full sun summer annual



Native Vines

Carolina yellow jessamine (*Gelsemium sempervirens*)

- sweet scented flowers in winter
- attractive to hummingbirds
- full to part sun
- poisonous if eaten



Coral honeysuckle (*Lonicera sempervirens*)

- full to part sun
- flowers throughout the year
- butterfly & hummingbird attractor

Passionflower/ Maypop

(*Passiflora incarnata*)

- interesting flower most of the year
- can be aggressive
- larval host for butterflies



Railroad Vine

(*Ipomoea pes-caprae*)

- more of a ground cover
- full sun
- salt tolerant
- great for erosion control



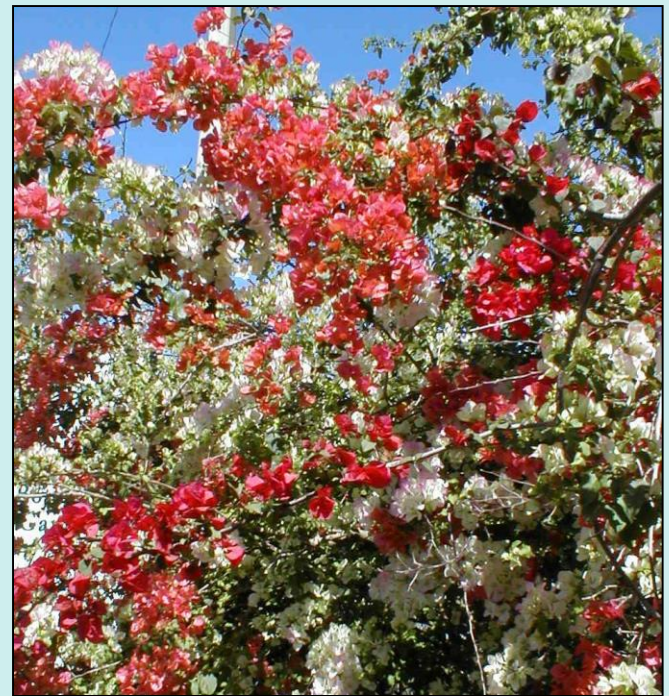


*Non- Native
Vines*

Bougainvillea

(*Bougainvillea spectabilis*)

- variety of flower colors from white to pink to orange
- thorns!
- can be aggressive
- salt tolerant



Confederate jasmine

(*Trachelospermum jasminoides*)

- spring/summer scented flowers
- full to part sun
- can be used as a ground cover
- salt tolerant



For More Information:

Native Plants

www.plantrealflorida.org

www.floridanativenurseries.org

<http://pinellas.fnpschapters.org>

Florida-Friendly Landscaping™

www.floridayards.org

<http://befloridian.org/>

Christine A. Claus, Water Conservation Coordinator
727-892-5688 / chris.claus@stpete.org
www.stpete.org/WaterConservation

